

Kappa light chain Mouse mAb, unconjugated, detector



Cat No.: SJ-AP2646

Applications

Reactive Species
Rat

Positive Samples
N/A

Validated Applications
ELISA

Recommended Dilution
ELISA: 1/1000

Product Information

Antibody Type
Mouse mAb

Immunogen
A synthesized peptide derived from Rat IgG

Modification
Unmodified

Isotype
IgG2b

Clone No.
N/A

Purification Method
N/A

Form
Liquid

Storage Buffer
Liquid in PBS containing 0.09% sodium azide as a preservative.

Storage Conditions
Store at 4°C short term. Aliquot and store at -20°C long term. Avoid freeze/thaw cycles.

Host
Mouse

Clonality
Monoclonal

Conjugation
Unconjugated

Concentration
N/A

Background Information

Function
N/A

UniProt ID
N/A

Organism
N/A

Recommended Name
N/A

Short Name
N/A

Alternative Names
Ig kappa chain C region

Gene ID
24491

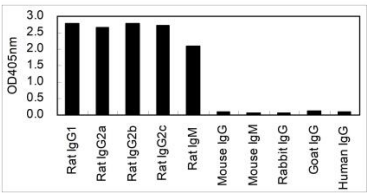
Gene Name
N/A

Calculated MW
N/A

Observed MW
N/A

Subcellular Location
N/A

Validation Data



NOTICE: For research use only. Not for therapeutic or diagnostic purposes.

Contact

For technical support and original validation data for this product please contact:

T: 400-018-6916
E: support@sanjingbio.com
W: www.sanjingbio.com